

# General Information

OCC : Okinawa Convention Center

LGH : Laguna Garden Hotel

## A. Registration

1. For those who paid by online registration and received a ID badge, please fill the ID badge and bring it to the meeting. If you forget to bring it, come to the Registration desk with your ID.

2. For on-site registration, please come to registration desk and pay registration fee (see below) and get a ID badge. Registration fee does not include the proceedings.

You can buy the proceedings (JPY 6,000) at the JSI desk near to the Registration desk (Exhibition Hall at OCC).

On Site Registration Fee

Member: JPY 12,000

Member, Student: JPY 3,000

Non-member: JPY 14,000

Non-member, Student: JPY 5,000

3. For Honorary and Distinguished members, please come to the General Information at the Registration desk (Exhibition Hall at OCC).

4. Registration desk is open in the following hours:

Monday, December 5: 7:30–16:30

Tuesday, December 6: 7:30–16:50

Wednesday, December 7: 7:30–16:40

## B. Application and Annual Membership Fee

1. For those who want to join the JSI, please come to the JSI desk (Exhibition Hall at OCC).

Application Fee: JPY 1,000

Annual Membership Fee

Member (Domestic): JPY 9,000

Member (Overseas): JPY 10,000

Student Member (Domestic): JPY 3,000

Student Member (Overseas): JPY 4,000

2. Please note that cash only for payment at the JSI desk.

## C. Council Meeting

12:30–13:30, Dec. 5/Room A

## D. The General Assembly, Ceremonies & Lectures

13:40–14:10, Dec. 6/Room A

Ceremonies and Lectures as given below will be held after the General Assembly in Room A on Dec. 6.

- Commendation Ceremony for JSI Meritorious Members
- JSI Award Ceremony and Lecture
- JSI Human Immunology Research Award Ceremony and Lecture
- JSI Women Immunologist Award Ceremony and Lecture
- JSI Young Investigator Award Ceremony
- “Kibou Projects” Startup Support for Young Researcher in Immunology and Scholarship for Doctoral Students in Immunology Winners Introduction
- Travel Bursary for the 16th ICI (JSI/NovoNordisk) Winners Introduction
- Tadamitsu Kishimoto International Travel Award Winners Introduction
- Ursula and Fritz Melchers Travel Award Winners Introduction

### **E. Symposia**

Scheduled is twelve sessions (S1-S12) by international speakers. For further information, see the program.

### **F. Poster and Workshop**

All the papers are presented in poster session. Presentations in workshops are selected from the papers.

The language for presentation and discussion is English.

During poster session beverages will be served.

### **G. Overview Talks**

Overview talks selected topics for students and those who are not specialized in the topics. Overview talks pick up a topic related to the following symposium session.

### **H. Seminar Ticket (include Lunch box)**

1. You can enjoy lunch box during the seminars and Lecture scheduled in lunch time. To get lunch box, you need to come to the Seminar ticket desk which is next to the registration desk and get a ticket beforehand. You need to have ID badge to get a ticket.

December 5: 7:45–11:40 (After 11:50, you may get Seminar ticket in front of each room if Seminar ticket is still left.)

December 6: 7:45–11:40 (After 11:50, you may get Seminar ticket in front of each room if Seminar ticket is still left.)

December 7: 7:45–11:40 (After 11:50, you may get Seminar ticket in front of each room if Seminar ticket is still left.)

2. With a ticket, you can get lunch box in front of a room for the seminar you choose after the following time.

December 5: 12:00–

December 6: 12:00–

December 7: 12:00–

### **I. Seminars**

■JSI Luncheon Lecture

■International Immunology Luncheon Seminar

■Technical Seminar

■Clinical Seminar

Lunch box is available for you. To obtain Lunch box, see above.

### **J. Exhibition**

Exhibition, Wireless LAN, and Drink Service are available at the Exhibition Hall (OCC).

### **K. Photographing and recording**

Photographing and recording is prohibited in symposia, workshops, and poster sessions. Please understand our policy, which helps presentation and discussion to be hot.

# Directions

## Access to Okinawa Convention Center

### By Taxi

- Takes approximately 40 minutes (14 km) and costs average ¥3,500 from the Naha Airport.
  - Takes approximately 30 minutes (10 km) and costs average ¥3,000 from the center of Naha city.
  - Takes approximately 90 minutes (56 km) and costs average ¥9,800 from the center of Nago city.
- \*Additional note: The taxi rate and the travel time may differ according to the traffic situation.

### By Bus/Yui Rail (Okinawa Urban Monorail)

#### Access form Naha Bus Terminal Station

#### A To the Okinawa Convention Center Bus Stop.

Route Number: No. 26, a part of No. 28, No. 32, No. 55 (takes from 40 minutes to 60 minutes) Fare : ¥530

Route Number: No. 112 (takes 50 minutes) No. 99 (takes 60 minutes)

#### B To the Mashiki Bus Stop

Route Number: No. 20, No. 77, No. 120 (takes from 45 minutes via Kokusai Street) Fare: ¥530

Route Number: No. 23, No. 28, No. 29, No. 63 (takes from 35 minutes via Kumoji Street) Fare: ¥530

Route Number: No. 31 (takes from 50 minutes via Kumoji Street) Fare: ¥530

#### Access from Naha International Air Port

#### C 50-70 minutes from Naha International Air Port (Bus Station No 3) to Okinawa Convention Center Bus Stop. Fare: ¥570

Route Number 26 (50 minutes) Route Number 99 (70 minutes)

#### D Airport Limousine Bus is easy accessible

This limousine liner is not to stop at the convention center, get off at Laguna Garden Hotel bus stop and walk to the center for 10 minutes. (takes from 55 minutes) Fare: ¥600

#### E Access by the monorail (Asahibashi station and Furushima Station are easy accessible)

-About 11 minutes from the airport to Asahibashi station. Fare: ¥260. From Asahibashi station to the bus terminal station takes 3 minutes by walk.

-About 21 minutes from the airport to Furushima station. Fare: ¥320. From Furushima station to the convention center takes 15 minutes by taxi.

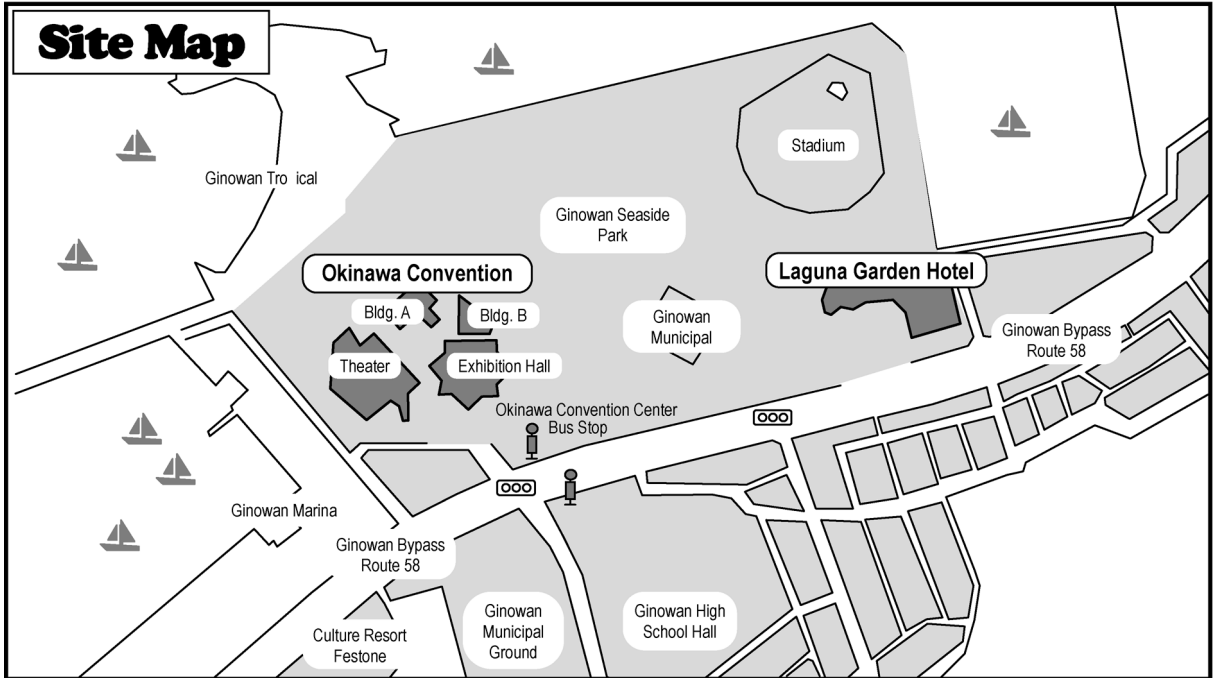
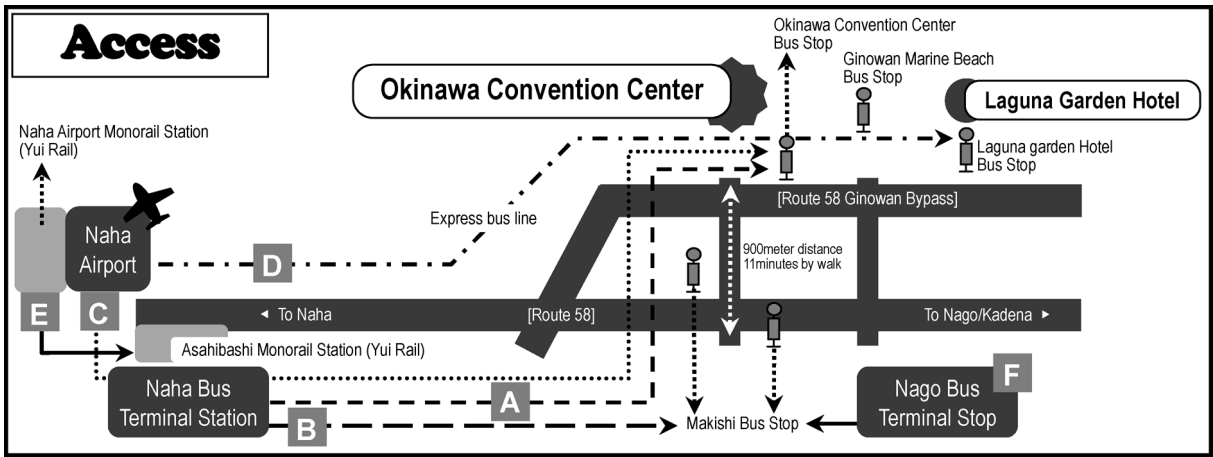
#### Access form Nago Bus Terminal Station

#### F About 120 minutes from Nago Bus Terminal Station to Mashiki bus stop. Fare: ¥1,650

Route No. 20 and No. 120

\*Additional note:

1. The required time is defer according to the traffic situation.
2. The operation of bus liner on Saturday, Sunday and public holidays are run in less number than on week days.



# JSI Shuttle

The JSI Shuttle Bus services (the morning service and the evening service) are operated between Naha city and the venue from December 5 to December 7.

The morning service	The evening service
<p><b>The pick-up point:</b> At Omoromachi Station of Yui Rail (Okinawa Urban Monorail)</p> <p><b>Route:</b> ↓ -Omoromachi Station of Yui Rail (Okinawa Urban Monorail) ↓ -Okinawa Convention Center ↓ -Laguna Garden Hotel</p> <p><b>Time:</b> 7:30 a.m.–8:00 a.m.</p> <p><b>Reservation:</b> You may book a ticket for the morning services when you register online. Fee: JPY 200 (one way/once a day)</p>	<p><b>The pick-up point:</b> Parking Area II of Okinawa Convention Center</p> <p><b>Route:</b> ↓ -Parking Area II of Okinawa Convention Center ↓ -Omoromachi Station ↓ -Makishi ↓ -Kencho-mae Station (Prefectural Office)</p> <p><b>Time:</b> After Poster Session</p> <p><b>Reservation:</b> You have to purchase a return ticket at the general information desk in the venue every day. Fee: JPY 200 (one way/once a day)</p>

\*Please note that the number of seats is limited and it is booked on a first-come-first-served basis.

\*The ticket is only valid for the service on the reserved date.

\*The booked ticket cannot be cancelled and refunded.

\*The JSI Shuttle is the limited service as mentioned above.

## Directions for the morning service 「午前 JSI バス」ご利用案内

\*To board the JSI shuttle, online pre-registration is required.

\*The JSI shuttle will depart from the bus stop on the map during 7:30 a.m. to 8:00 a.m.

\*Please come to the JSI shuttle stop in time and show the ticket you have received by e-mail or post.

\*Buses may be temporarily full and you may be asked to wait for other buses following in line.

\*After 8:00 a.m., when the morning service is over, you are asked to take local bus lines (#55, #112) to the venue.

\*JSI バスご利用にあたってはウェブ事前予約が必要です。

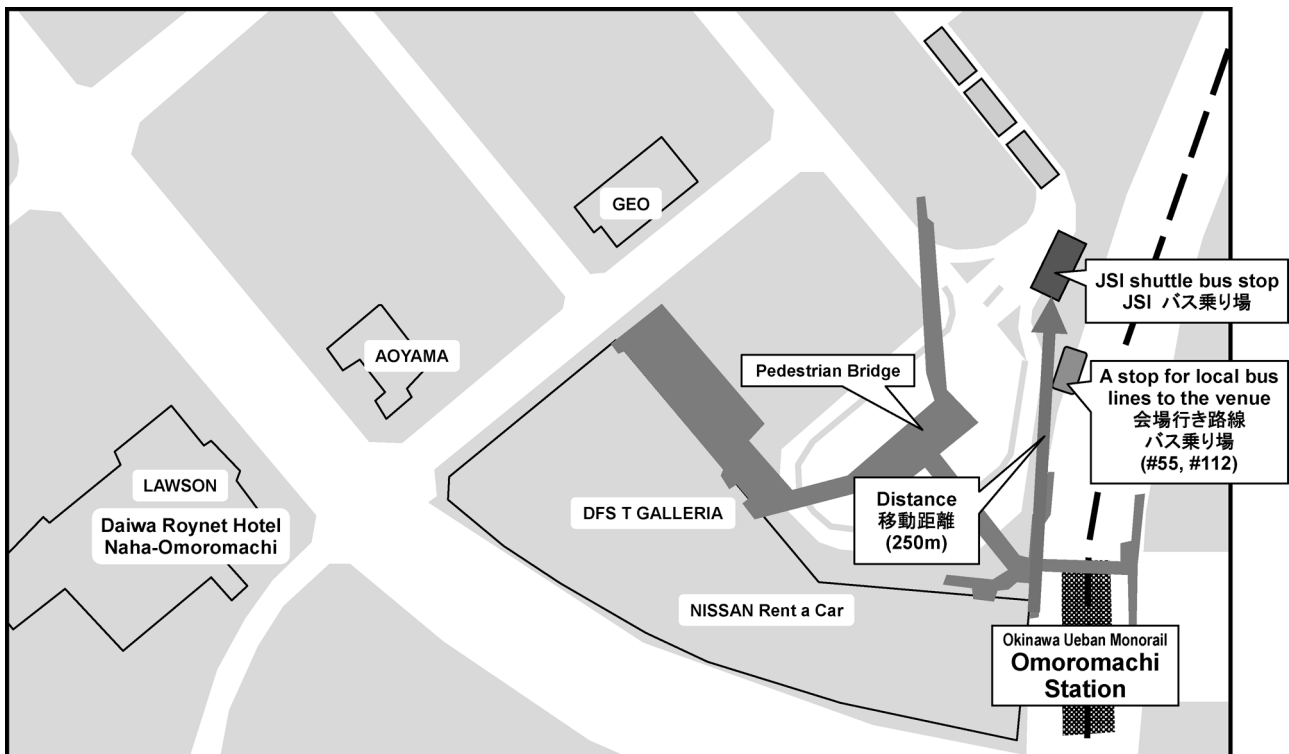
\*バスはマップに示された乗り場より午前 7 時 30 分から午前 8 時のあいだ順次出発します。

\*運行時間内にバス乗り場にお越しのうえ事前に送られたチケットを提示してご乗車ください。

\*出発がバスが一時的に混み合う場合には後続バスをお待ち願います。

\*午前 8 時以後、JSI バスが終了の場合は会場行きの路線バス(#55, #112)をご利用ください。

JSI shuttle bus stop at Omoromachi Station 「おもろまち駅 JSI バス乗り場」



## Directions for the evening service 「午後 JSI バス」 ご利用案内

\*To board the JSI shuttle, purchase a ticket and come to the JSI shuttle bus stop in the map after the poster session.

\*You may get off the bus at Omoromachi Station, Makishi or Kencho-mae Station (Prefectural Office). The evening service will not stop at other places.

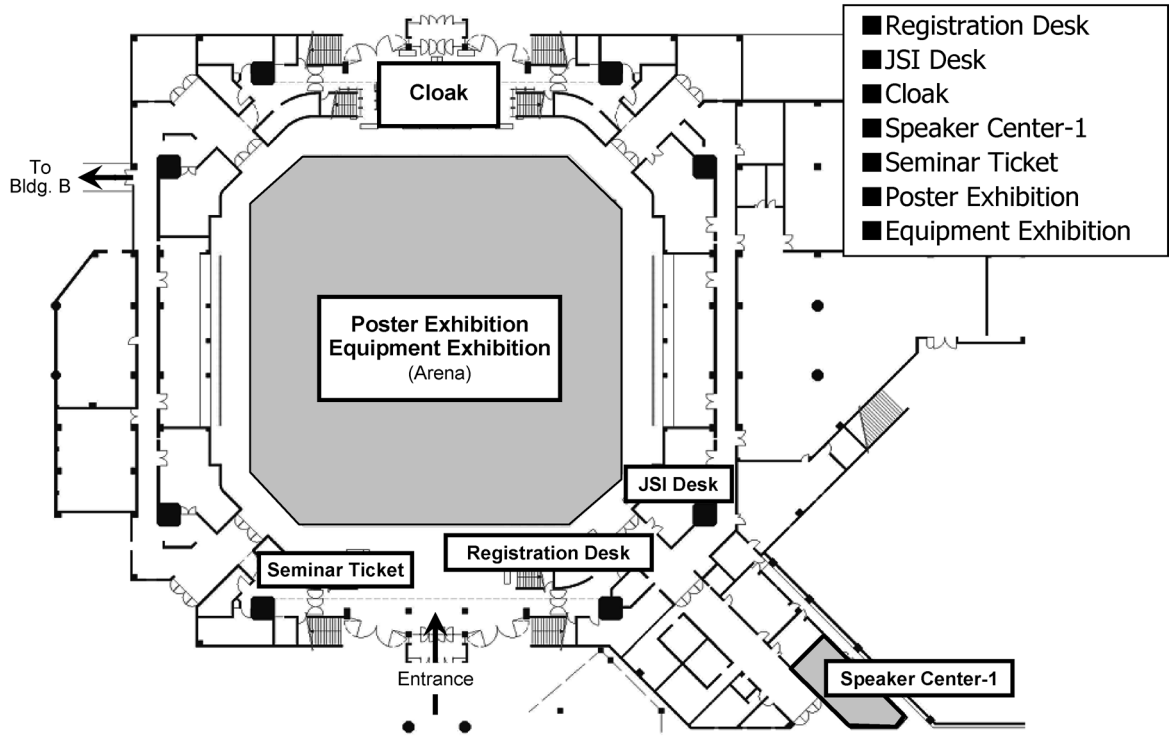
\*JSI バスご利用にあたってはチケットを購入のうえポスターセッション後にマップに示された乗車場所にお越しください。

\*降車場所はおもろまち駅、牧志、県庁前駅の3か所のみで、それ以外の場所には停まりません。

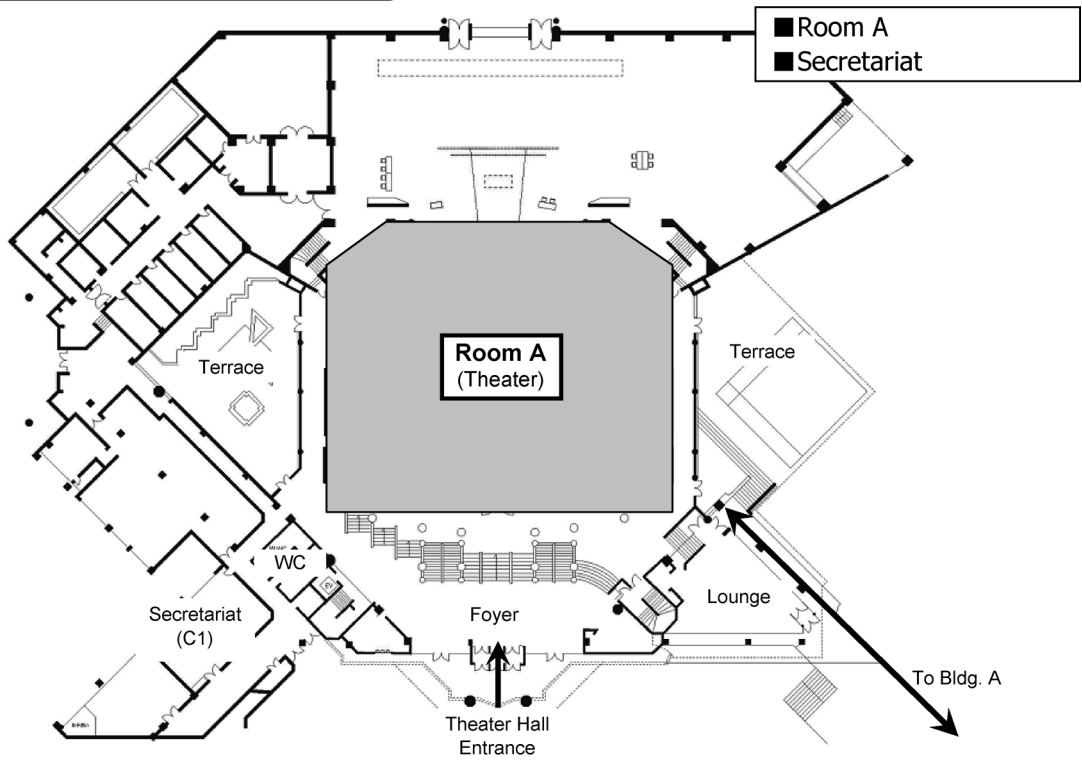
JSI shuttle bus stop at Okinawa Convention Center 「沖縄コンベンションセンター JSI バス乗り場」



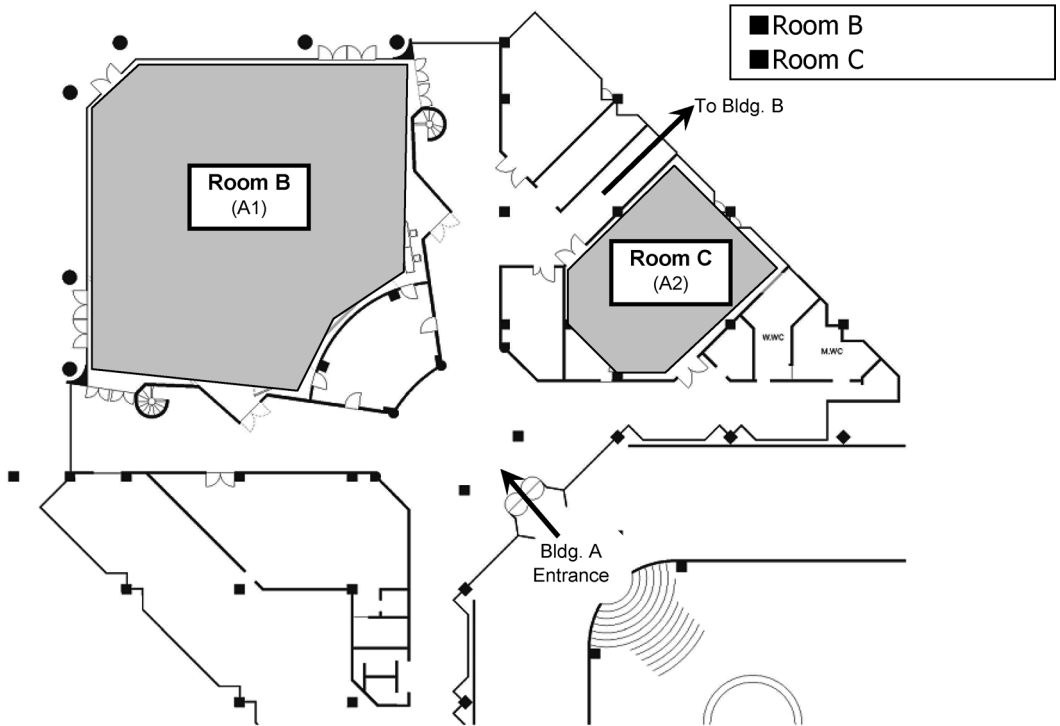
## Exhibition Hall



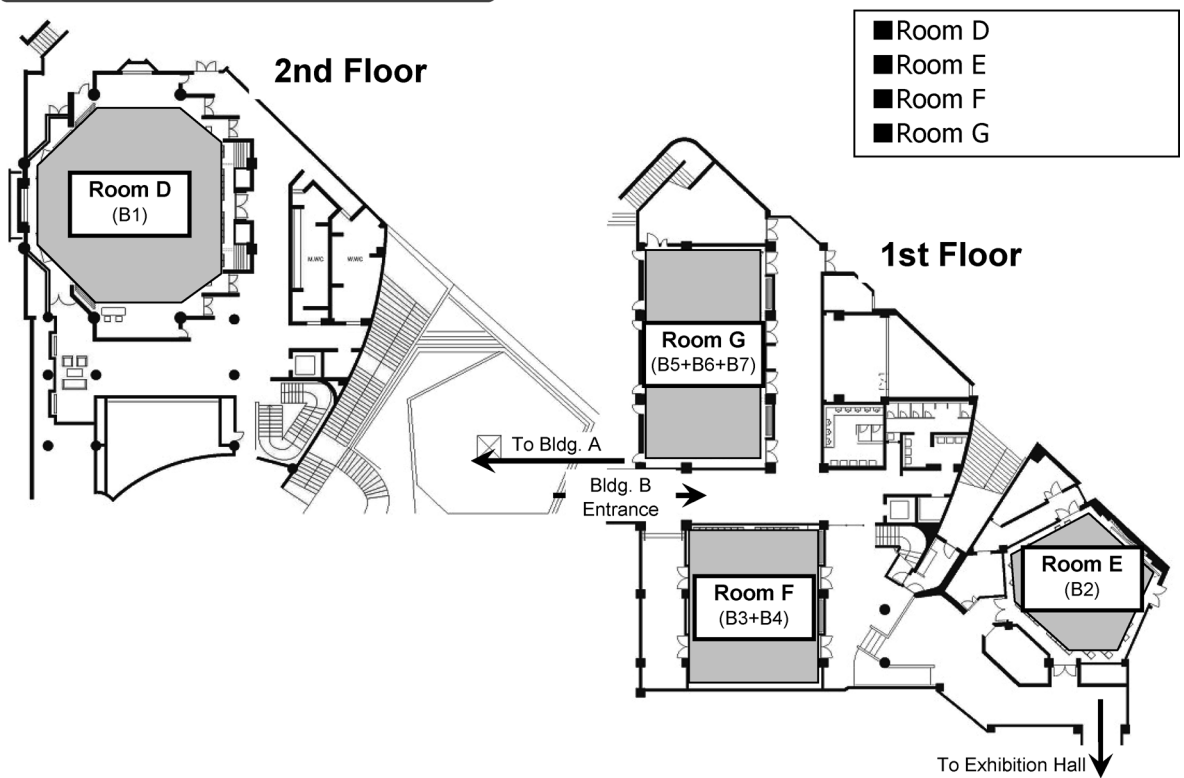
## Theater



**Building A**

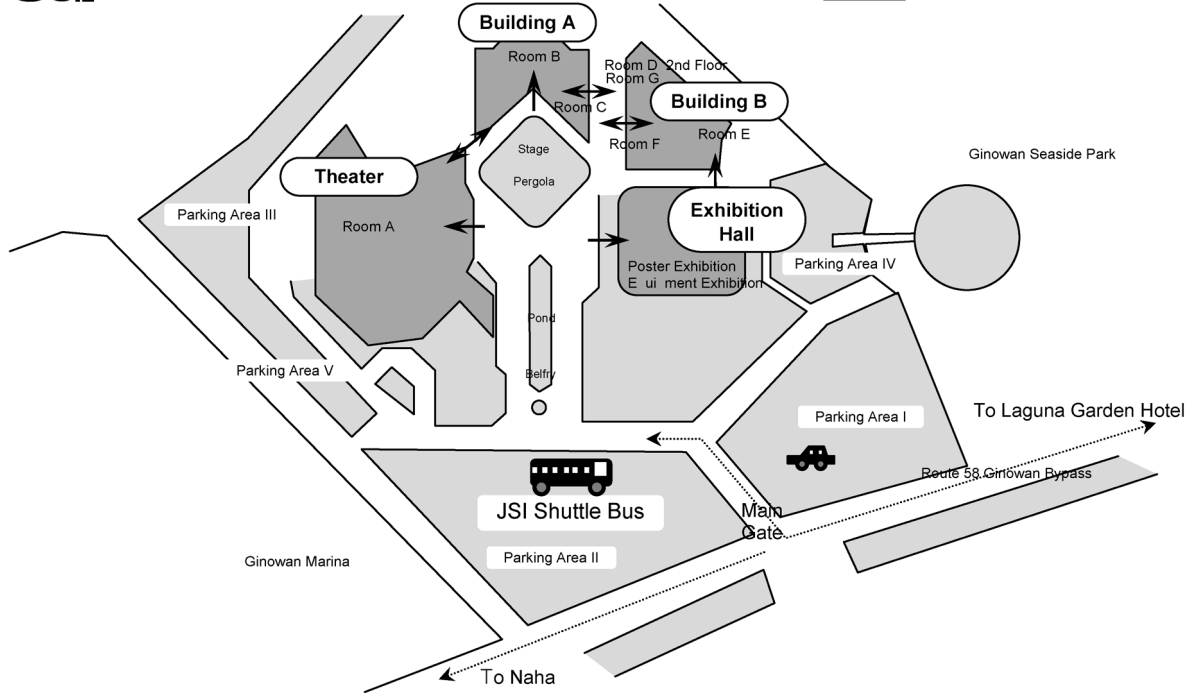


**Building B**

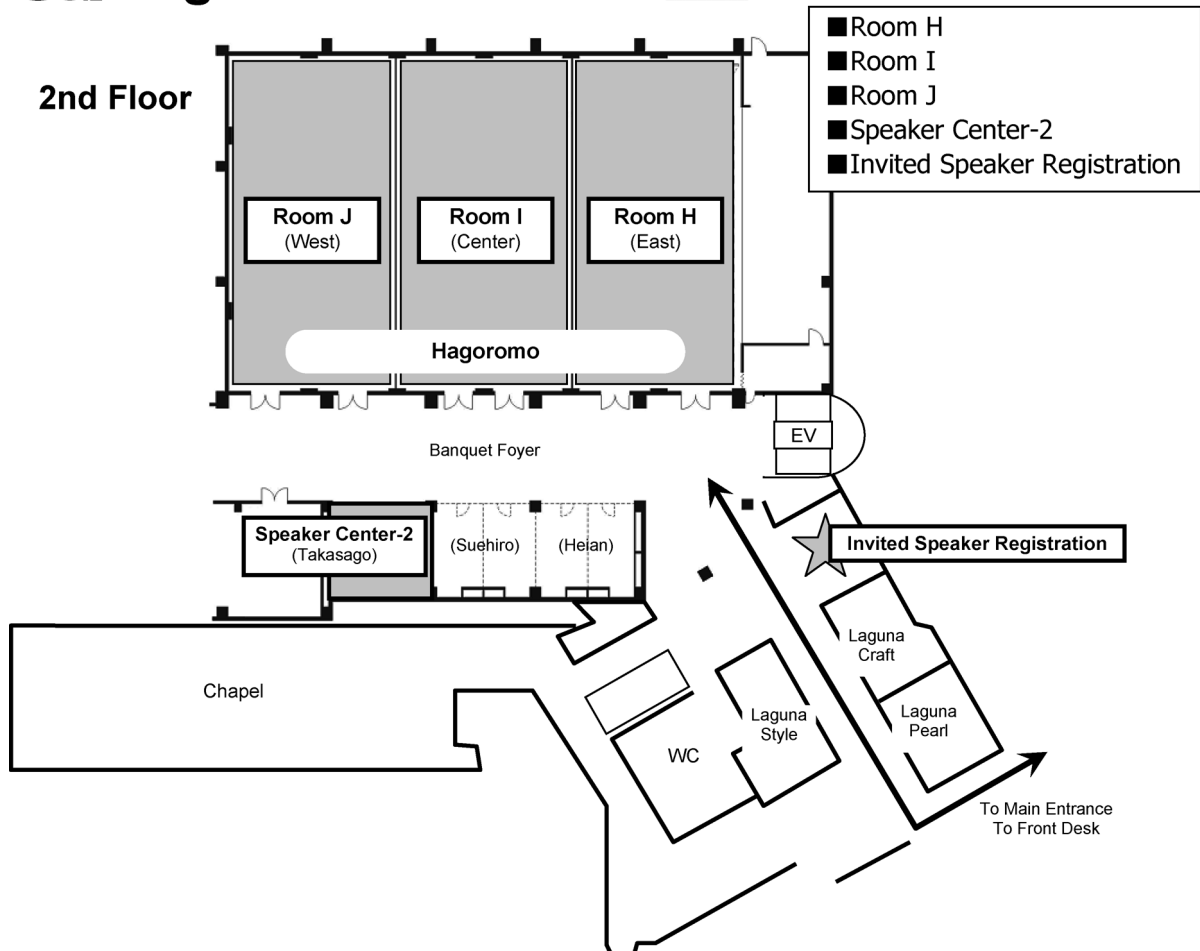




# JSI Okinawa Convention Center



# JSI Laguna Garden Hotel



# The 45th Annual Meeting of The Japanese Society for Immunology Schedule

## December 5 (Mon.)

Overview Talk (オーバービュートーク)	9 : 00 ~ 9 : 30	Room A, H, I, J
Symposium	9 : 30 ~ 12 : 00	Room A, H, I, J
Poster Exhibition, Discussion	9 : 00 ~ 18 : 50	Exhibition Hall
Equipment Exhibition	10 : 00 ~ 18 : 50	Exhibition Hall
JSI Luncheon Lecture	12 : 30 ~ 13 : 30	Room B, E
Technical Seminar	12 : 30 ~ 13 : 30	Room C, G
Clinical Seminar	12 : 30 ~ 13 : 30	Room D, F
Council Meeting	12 : 30 ~ 13 : 30	Room A
Workshop	13 : 45 ~ 16 : 40	Room A, B, C, D, E, F, G

## December 6 (Tue.)

Overview Talk (オーバービュートーク)	9 : 00 ~ 9 : 30	Room A, H, I, J
Symposium	9 : 30 ~ 12 : 00	Room A, H, I, J
Poster Exhibition, Discussion	9 : 00 ~ 19 : 00	Exhibition Hall
Equipment Exhibition	10 : 00 ~ 19 : 00	Exhibition Hall
JSI Luncheon Lecture	12 : 30 ~ 13 : 30	Room F
Technical Seminar	12 : 30 ~ 13 : 30	Room C, D, E, G
Clinical Seminar	12 : 30 ~ 13 : 30	Room B
General Assembly & Award Lecture	13 : 40 ~ 15 : 20	Room A
Workshop	15 : 30 ~ 16 : 50	Room A, B, C, D, E, F, G

## December 7 (Wed.)

Overview Talk (オーバービュートーク)	9 : 00 ~ 9 : 30	Room A, H, I, J
Symposium	9 : 30 ~ 12 : 00	Room A, H, I, J
Poster Exhibition, Discussion	9 : 00 ~ 18 : 50	Exhibition Hall
Equipment Exhibition	10 : 00 ~ 18 : 50	Exhibition Hall
International Immunology Luncheon Seminar	12 : 30 ~ 13 : 30	Room B
Technical Seminar	12 : 30 ~ 13 : 30	Room D, E, G
Clinical Seminar	12 : 30 ~ 13 : 30	Room C, F
Workshop	13 : 45 ~ 16 : 40	Room A, B, C, D, E, F, G